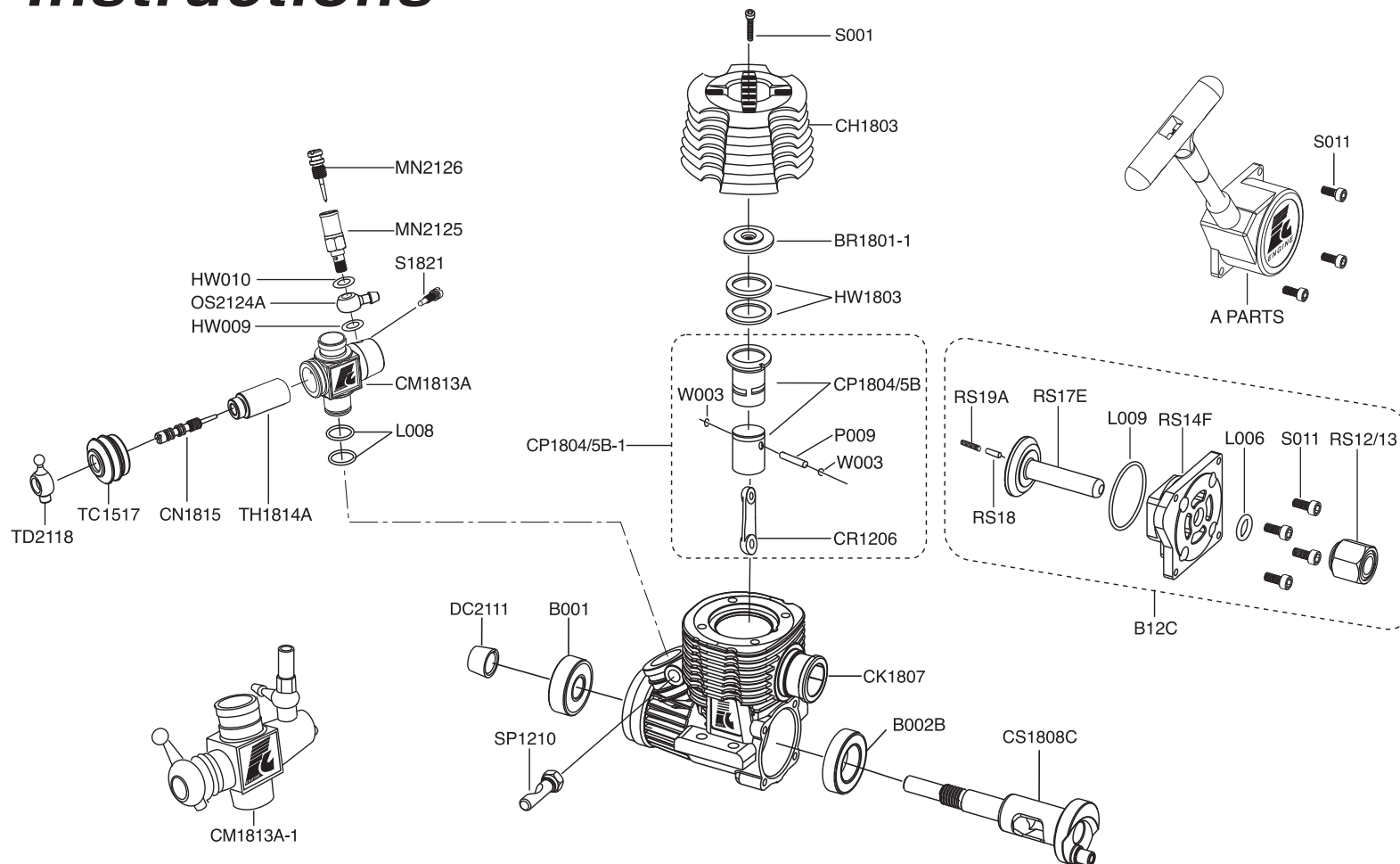




# FORCE 18 REAR EXHAUST ENGINE

## Engine Instructions



### PARTS LIST

ITEM NO.	DESCRIPTION
B001	BALL BEARING 607Z
B002B	BALL BEARING 6901
BR1801-1	BURN ROOM
CH1803	CYLINDER HEAD
CK1807	CRANKCASE-BLACK
CM1813A	COMPOSITE CARB MAIN BODY
CM1813A-1	COMPOSITE CARB COMPLETELY SET
CN1815	IDLE NEEDLE
CP1804/5B	CYLINDER SLEEVE/PISTON
CP1804/5B-1	CYLINDER SLEEVE/PISTON SET
CR1206	CONNECTING ROD
CS1808C	CRANKSHAFT SG
DC2111	DRIVE BRASS WASHER
DG2112	DRIVE GEAR
HW009	WASHER 0.6X4.1X7.5MM
HW010	WASHER 0.6X5.1X7.5MM
HW1803	CYLINDER HEAD WASHER 1pcs
L004	MAIN NEEDLE VALVE "O" RING
L008	CARBURETOR "O" RING
MN2125	MAIN NEEDLE VALVE HUB
MN2126	MAIN NEEDLE
MN2126-1	MAIN NEEDLE SET
OS2124A	FUEL NIPPLE
P009	PISTON GUDEON PIN
S001	CYLINDER HEAD BOLT 4PCS
S1821	ADJUST SCREW
SP1210	CARB PINCH BOLT
TC1517	DUST COVER
TD2118	THROTTLE SCREW CAP
TH1814A	THROTTLE & COUNTER NEEDLE VALVE
W003	"G" PIN RETAINERS
<b>PULL STARTER ASSEMBLY</b>	
A + B12C	RECOIL START UNIT ASSEMBLY
A Parts	A PARTS ASSEMBLY - PLASTIC PART
B 12C	B PARTS ASSEMBLY
L006	"O" RING-CONNECTIVE SEAT
L009	REAR COVER "O" RING
RS12/13	ONE WAY BEARING SET
RS14F	CONNECTIVE SEAT
RS17E	STARTING DISK
RS18	STARTING PIN
RS19A	PRESSURE SPRING
S011	REAR COVER BOLT 2.6x7