

# 32 R/ABC

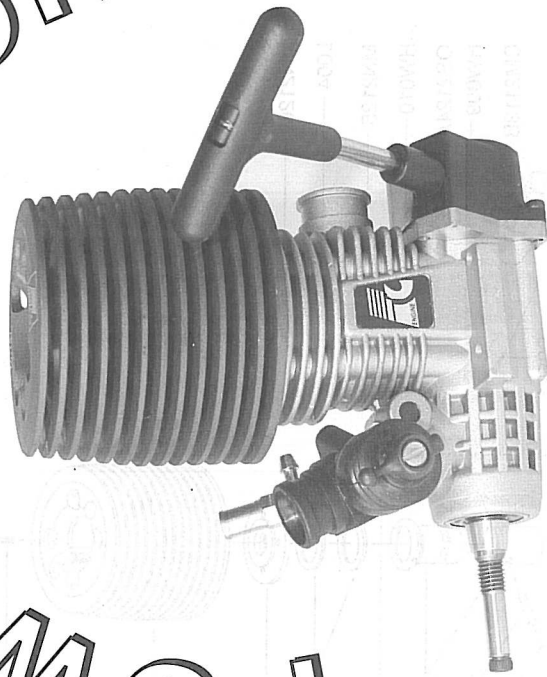
## INSTRUCTION

### ■ USER INSTRUCTION

FORCE ENGINE START QUITE EASILY, USING THE FOLLOWING 4 POINTS PROCEDURE:

1. CLOSE THE MAIN NEEDLE VALVE ALL THE WAY BY TURNING CLOCKWISE, THEN OPEN IT 4 TURNS.
2. CLOSE THE THROTTLE ALL THE WAY, ADJUSTED VENTILATION GAP IS 1MM WIDE.
3. CLOSE THE SUPPLY NEEDLE VALVE ALL THE WAY, THEN OPEN IT TO BE FLAT.
4. START ENGINE, USE SUPPLY NEEDLE VALVE ADJUSTED TO FULL OIL STATUS UNTIL THE ENGINE IS RUNNING STEADILY. IN THE TEST PERIOD OF TIME, RUN OUT ABOUT 3 BUCKET'S (125C.C.) OIL IN FULL OIL STATUS, ADJUSTED THE ENGINE TURN TO HIGH SPEED SLOWING UNTIL THE BEST STATUS.

# WE ARE OF FORCE



### ■ SPECIFICATIONS

NO	ITEMS	DISP (c.c)	BORE (mm)	STROKE (mm)	OUTPUT (PS or BHP / r.p.m)	PRACTICAL RANGE (r.p.m)
E-3201	32R/ABC/RS	5.24	20.1	16.6	2.99PS/33,000	3,000~33,000



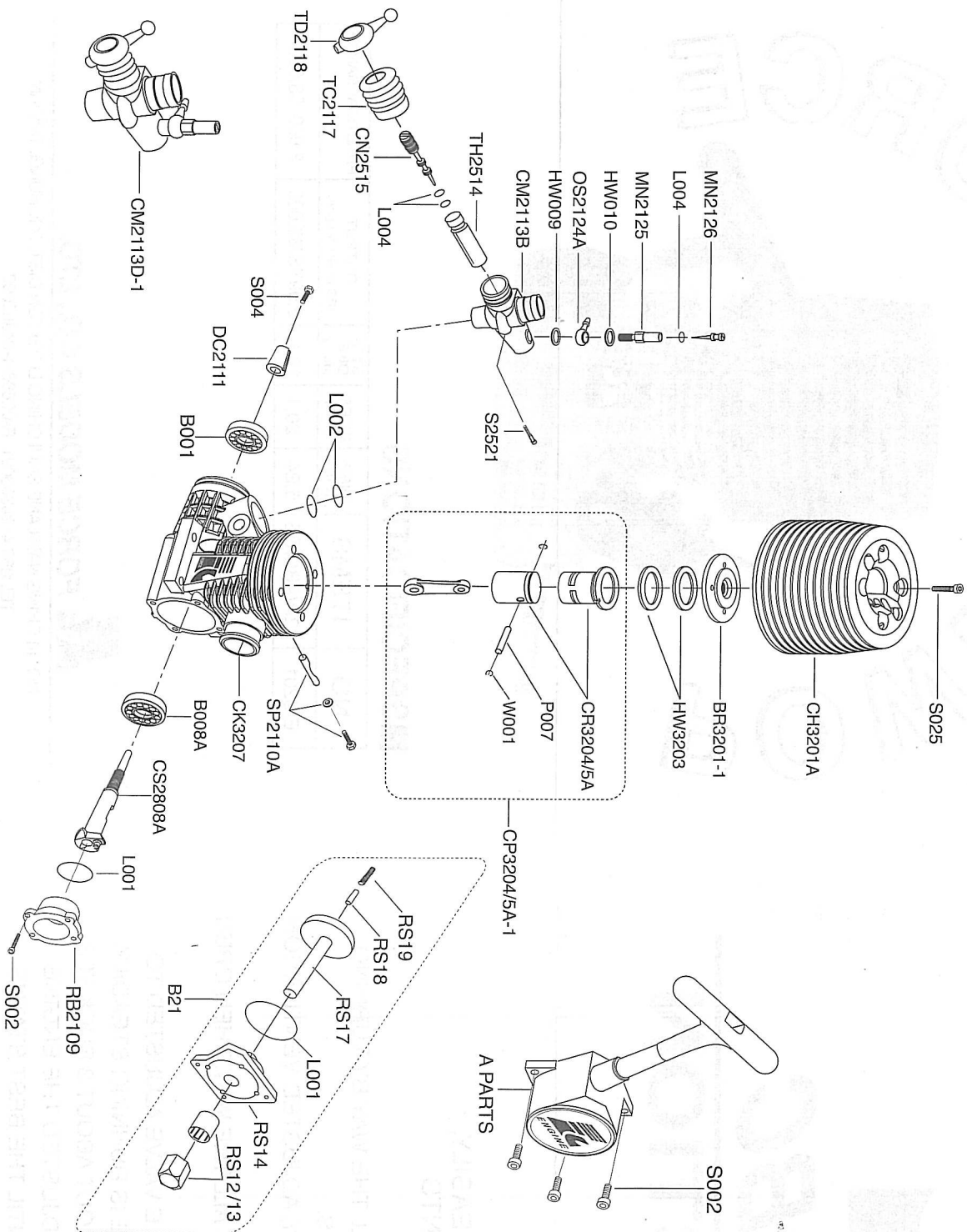
**FORCE MODELS CO., LTD.**

NO. 14 CHING NAN LANE SHUI CHING LI PEI TON DIST. TAICHUNG, TAIWAN.  
TEL:886-4-24363091 FAX:886-4-24363092



# 32 REAR EXPLODED DRAWING

## Engine Instructions



### PART LIST

ITEM NO.	DESCRIPTION
B001	Front Ball Bearing
B008A	Rear Ball Bearing
BR3201-1	Burn Room (32R)
CH3201A	Cylinder Head Gray Black Color-Casting
CK3207	Crankcase 32R
CM2113B	Composite Carburetor Main Body
CM2113D-1	Composite Carburetor Complete Set
CN2515	Throttle Needle Valve
CP3204/5A	Cylinder Sleeve/Piston 32R
CP3204/5A-1	Cylinder Sleeve/Piston 32R (Complete Set)
CR2106A	Connecting Rod
CS2808A	Crankshaft SG
DC2111	Drive Copper Washer
HW009	Washer
HW010	Washer
HW3203	Cylinder Head Washer 0.2mm
L002	Carburetor "O" Ring
L004	Main Needle Valve "O" Ring
MN2125	Main Needle Seat
MN2126	Main Needle
MN2126-1	Main Needle Set( Including 2126, L004, 2125, 2124)
OS2124A	Fuel Nipple-Brass
P010	Piston Gudgeon Pin
RB2109	Rear Black Cover
S002	Rear Cover Screws
S004	Clutch Screw 3 X 6
S025	Cylinder Head Bolt 4pcs
S2521	Throttle Adjustment Screw
SP2110A	Carburetor Setting Pin
TC2117	Throttle Cover
TD2118	Throttle & Counter Needle Valve
TH2514	Throttle & Counter Needle Valve
W001	"G" Pin Snap Ring 2pcs/set
<b>PULL STARTER ASSEMBLY</b>	
A + B21	Recoil Start Unit Assembly
A Parts	A Parts Assembly - Plastic Part
B 21	B Parts Assembly
L001	Rear Cover "O" Ring
RS12/13	One Way Bearing Set
RS14	Connective Seat
RS17	Starting Axle
RS18	Starting Pin
RS19	Pressure Spring