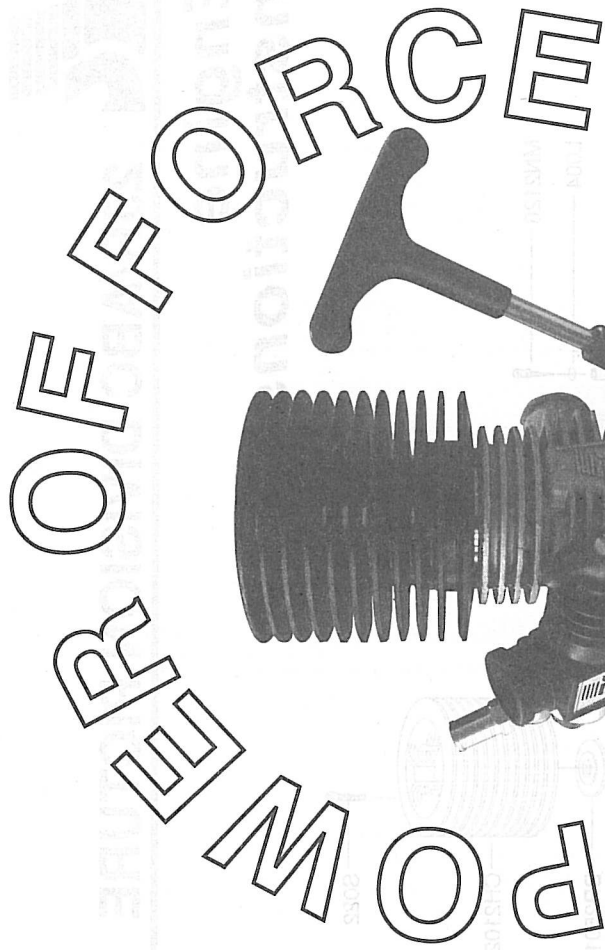


25R/ABC INSTRUCTION

■ USER INSTRUCTION

FORCE ENGINE START QUITE EASILY,
USING THE FOLLOWING 4 POINTS
PROCEDURE:

1. CLOSE THE MAIN NEEDLE VALVE ALL THE WAY BY TURNING CLOCKWISE, THEN OPEN IT 3 TURNS.
2. CLOSE THE THROTTLE ALL THE WAY, ADJUSTED VENTILATION GAP IS 1MM WIDE.
3. CLOSE THE SUPPLY NEEDLE VALVE ALL THE WAY, THEN OPEN IT 2 1/2 TURNS.
4. START ENGINE, USE SUPPLY NEEDLE VALVE ADJUSTED TO FULL OIL STATUS UNTIL THE ENGINE IS RUNNING STEADILY. IN THE TEST PERIOD OF TIME, RUN OUT ABOUT 3 BUCKET'S (125C.C.) OIL IN FULL OIL STATUS, ADJUSTED THE ENGINE TURN TO HIGH SPEED SLOWING UNTIL THE BEST STATUS.



■ SPECIFICATIONS

NO	ITEMS	DISP (c.c)	BORE (m.m)	STR- OKE (m.m)	OUTPUT (PS or BHP/ r.p.m)	PRACTICAL RANGE (r.p.m)
E-2501	25R/ABC/RS	4.10	18.0	16.0	2.1PS/30,000	6,500~31,000



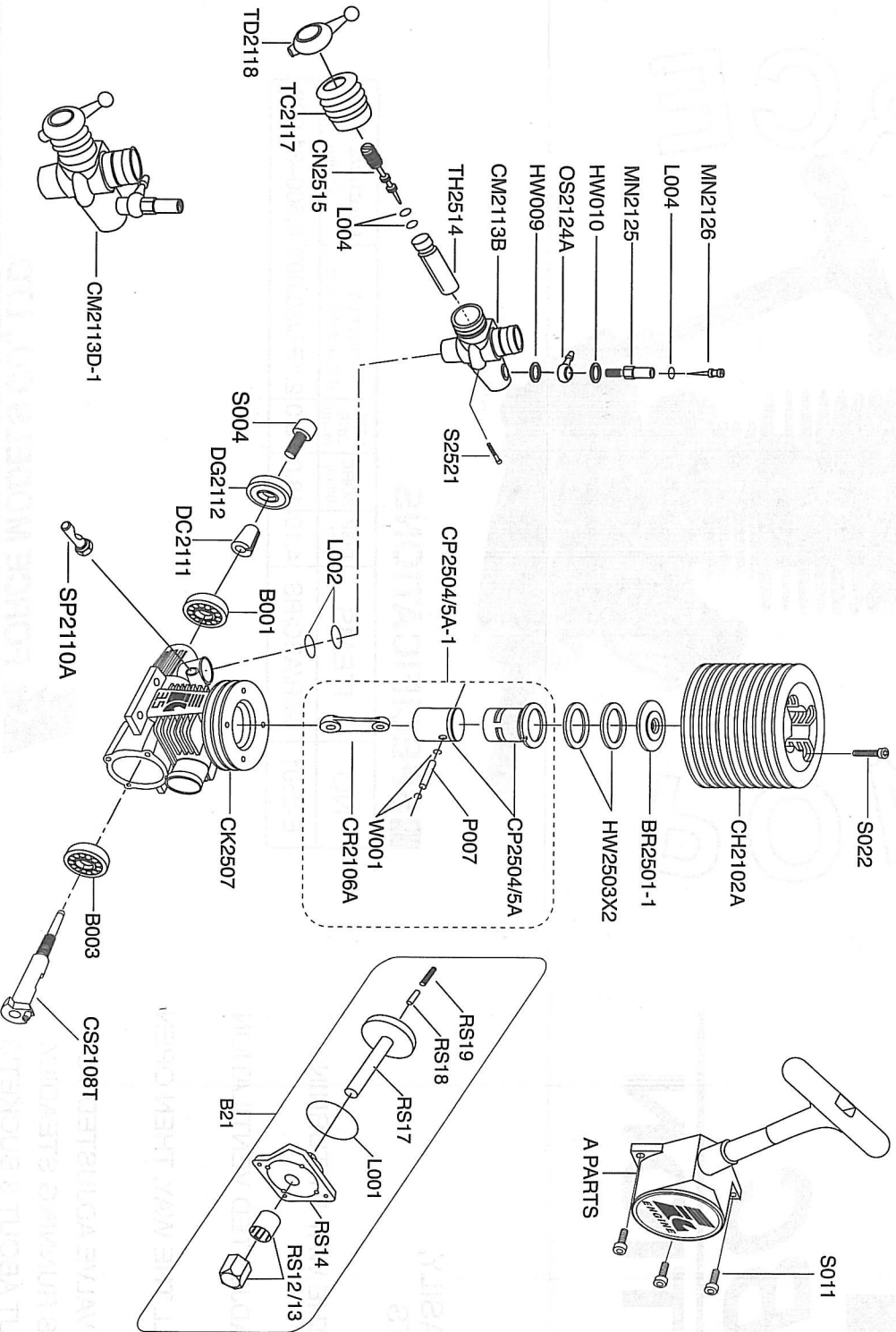
FORCE MODELS CO., LTD.

NO. 14 CHING NAN LANE SHU CHING LI PEI TON DIST. TAICHUNG, TAIWAN.
TEL:886-4-24363091 FAX:886-4-24363092



25R/ABC DIVISION PICTURE

Engine Instructions



ITEM NO.	DESCRIPTION
B001	Ball Bearing 607Z
B003	Ball Bearing 6901 13mm
BR2501-1	Burn Room (25R)
CH2102A	Cylinder Head Black Colour
CK2507	Crankcase 25R
CM2113B	Composite Carburetor Main Body
CM2113D-1	Composite Carburetor Complete Set
CN2515	Throttle Needle
CP2504/5A	Cylinder Sleeve/Piston 25R
CP2504/5A-1	Cylinder Sleeve/Piston 25R (Complete Set)
CR2106A	Conrod
CS2108T	Crankshaft SG 13mm 8P
DC2111	Drive Copper Washer
HW009	Washer
HW010	Washer
HW2503	Cylinder Head Washer 0.2X18X23 25R
L002	Carburetor "O" Ring
L004	Main Needle Valve "O" Ring
L005	Silicone Seal for Rear Exhaust Manifold
MN2125	Main Needle Seat
MN2126	Main Needle
MN2126-1	Main Needle Set (Including 2126, L004, 2125,2124)
OS2124A	Fuel Nipple-Brass
P007	Piston Gudgeon Pin 25R
RB2109	Rear Back Cover
S022	Cylinder Head Bolt M3X14 (4Pcs)
S011	Rear Cover Bolt
S004	Clutch Washer M3X6
S2521	Throttle Stop Adjustment Screw
SP2110A	Carburetor Setting Pin
TC2117	Throttle Boot
TD2118	Throttle Screw Cap
TH2514	Throttle
W001	"O" Pin Snap Ring 2pcs/set
PULL STARTER ASSEMBLY	
A + B21	Recoil Start Unit Assembly
A Parts	A Parts Assembly-Plastic Part
B 21	B Parts Assembly
L001	Rear Cover "O" Ring
RS12/13	One Way Bearing Set
RS14	Connective Seat
RS17	Starting Axle
RS18	Starting Pin
RS19	Pressure Spring